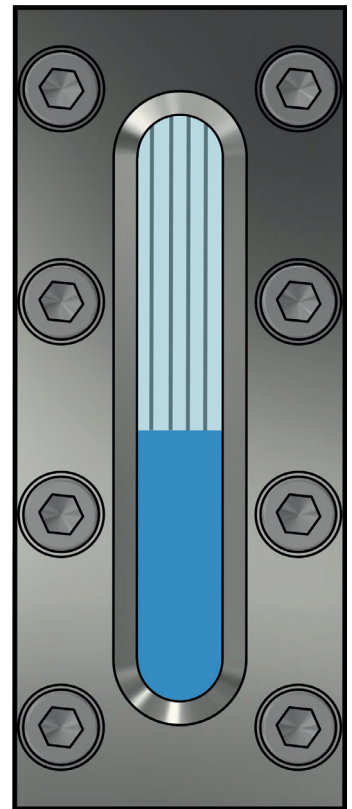
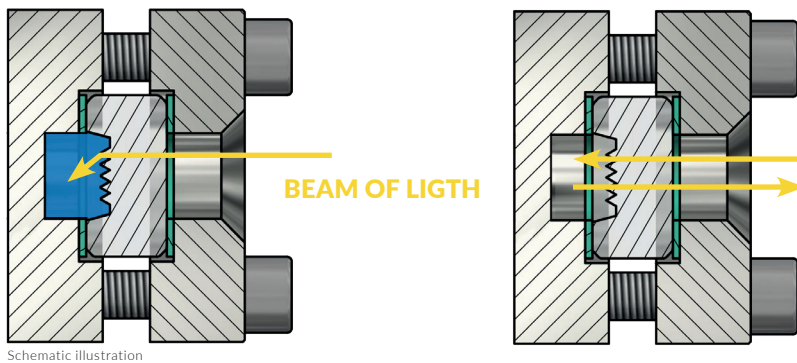


REFLEXGLASS

A reflex sight glass is used to read the liquid level directly with the eyes or by using a camera. On the medium side, grooves are pressed into the reflex sight glass, which make the level clearer and easier to read. They are mostly installed in closed fittings such as level indicators.

The principle of the reflex glass is based on the difference in the refractive indices of liquid and gas or of water and steam. The liquid level shows a striking dark colour for the liquid space and a bright white colour for the empty or gas space.



TRANSPARENTGLASS

Transparent glasses have a smooth surface on both the medium and the atmosphere side. These glasses are mostly used in rectangular sight glasses with open housings on both sides for mounting on containers or pipelines.

The smooth surface has the advantage that mica protection screens can be used for use with particularly aggressive media. This is not possible with reflex sightglasses!

